

The Trail to Green Mountain

finding the path to a trails culture in Costa Rica



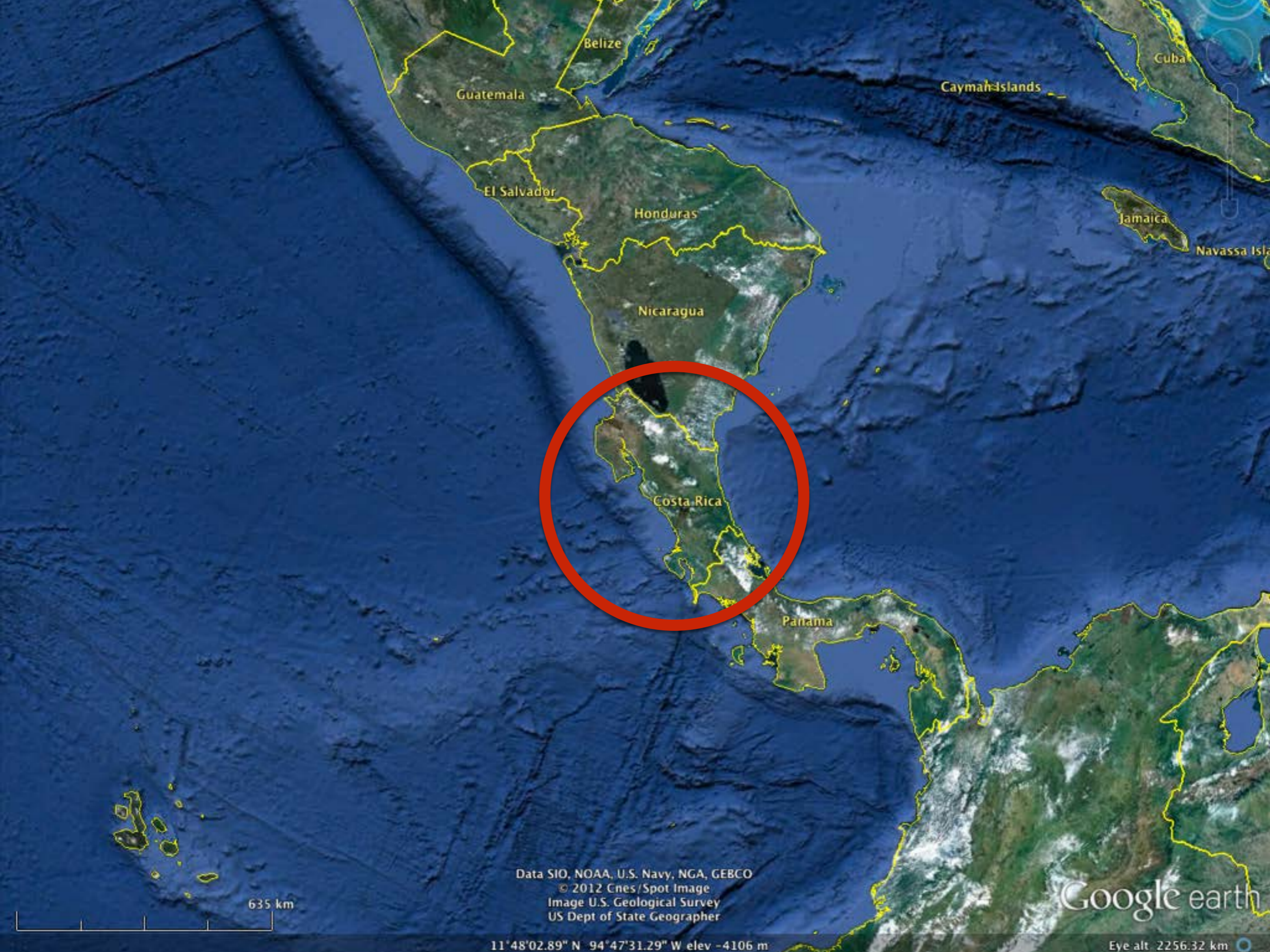


Costa Rica



Data SIO, NOAA, U.S. Navy, NGA, GEBCO
© 2012 Google
Image © 2012 TerraMetrics
US Dept of State Geographer

Google earth



Belize

Guatemala

El Salvador

Honduras

Nicaragua

Costa Rica

Panama

Cayman Islands

Cuba

Jamaica

Navassa Isla

635 km

Data SIO, NOAA, U.S. Navy, NGA, GEBCO
© 2012 Cnes/Spot Image
Image U.S. Geological Survey
US Dept of State Geographer

11°48'02.89" N 94°47'31.29" W elev -4106 m

Google earth

Eye alt 2256.32 km



Costa Rica

Google earth

Image Landsat
Data LDEO, Columbia, NSF, NOAA
US Dept of State Geographer
Data SIO, NOAA, U.S. Navy, NGA, GEBCO

100 km

Costa Rica

0.1% of the world's landmass
it contains 5% of the world's [biodiversity](#)

Around 25% of the country's land area is in protected national parks and protected areas—the largest percentage of protected areas in the world (developing world average 13%, developed world average 8%)



Monteverde Reserves

Mangroves

Costa Rica

Protected Areas of Costa Rica

Google earth

Image Landsat
Data LDEO, Columbia, NSF, NOAA
US Dept of State Geographer
Data SIO, NOAA, U.S. Navy, NGA, GEBCO

100 km



Monteverde Reserves

Mangroves

Costa Rica

Protected Areas of Costa Rica

Biological Corridors of Costa Rica

Google earth

Image Landsat
Data LDEO-Columbia, NSF, NOAA
US Dept of State Geographer
Data SIO, NOAA, U.S. Navy, NGA, GEBCO

100 km

Alajuela

Monteverde
San Luis

Bellbird Biological Corridor



Alajuela

Monteverde
San Luis

Bellbird Biological Corridor

Sendero Pacífico





The Reserves of Monteverde

57,278 h -141,540 a

Arenal National Park

12,121 ha - 30,538 a

Abangares Watershed Reserve

4383 ha - 10,831 a

The Reserves of Monteverde

28,027 ha - 69,258 a



Alberto Manuel Brenes

Biological Reserve

8,209 ha - 20,285 a

Bellbird Biological Corridor



Peñas Blancas Wildlife Refuge

2,399 ha - 5,928 a

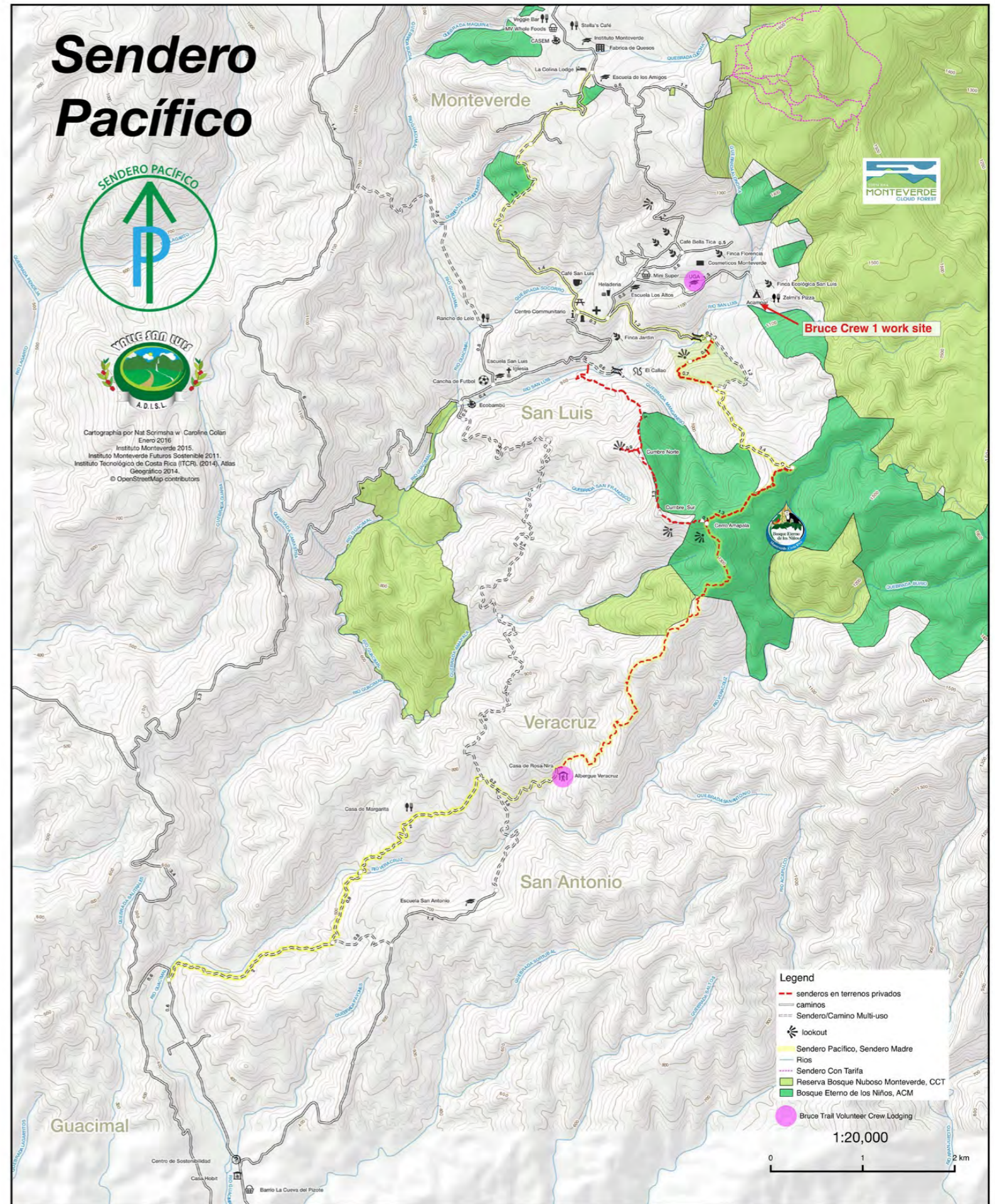
Costa de Pajaros

Montes de Oro Protected Zone

1,902 ha - 4,700 a

1:80,000

Senderit@s de San Luis



Colectivo Caminantes, Guacimal

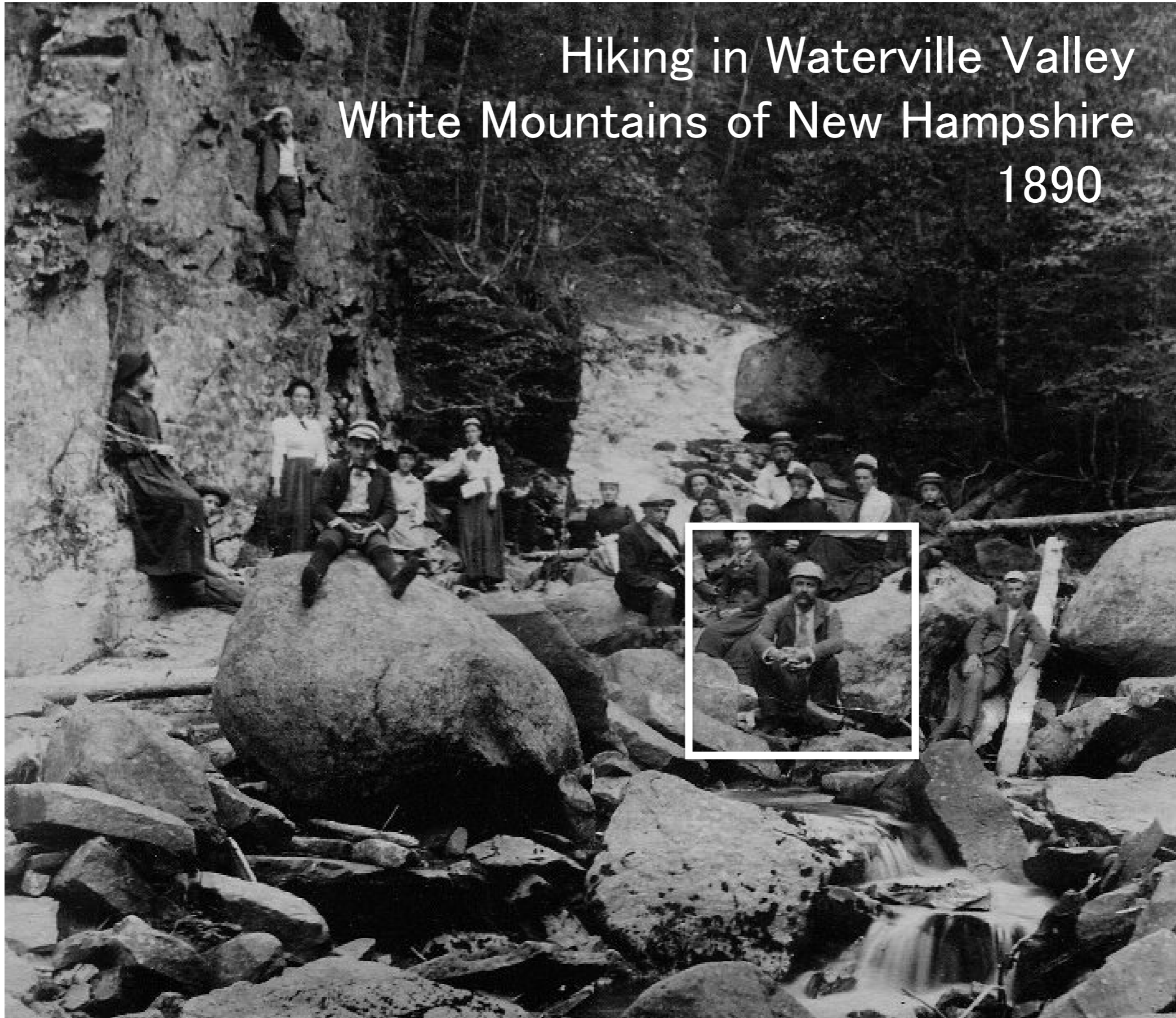


Antecedents

Waterville Valley
White Mountains of New Hampshire



Hiking in Waterville Valley
White Mountains of New Hampshire
1890

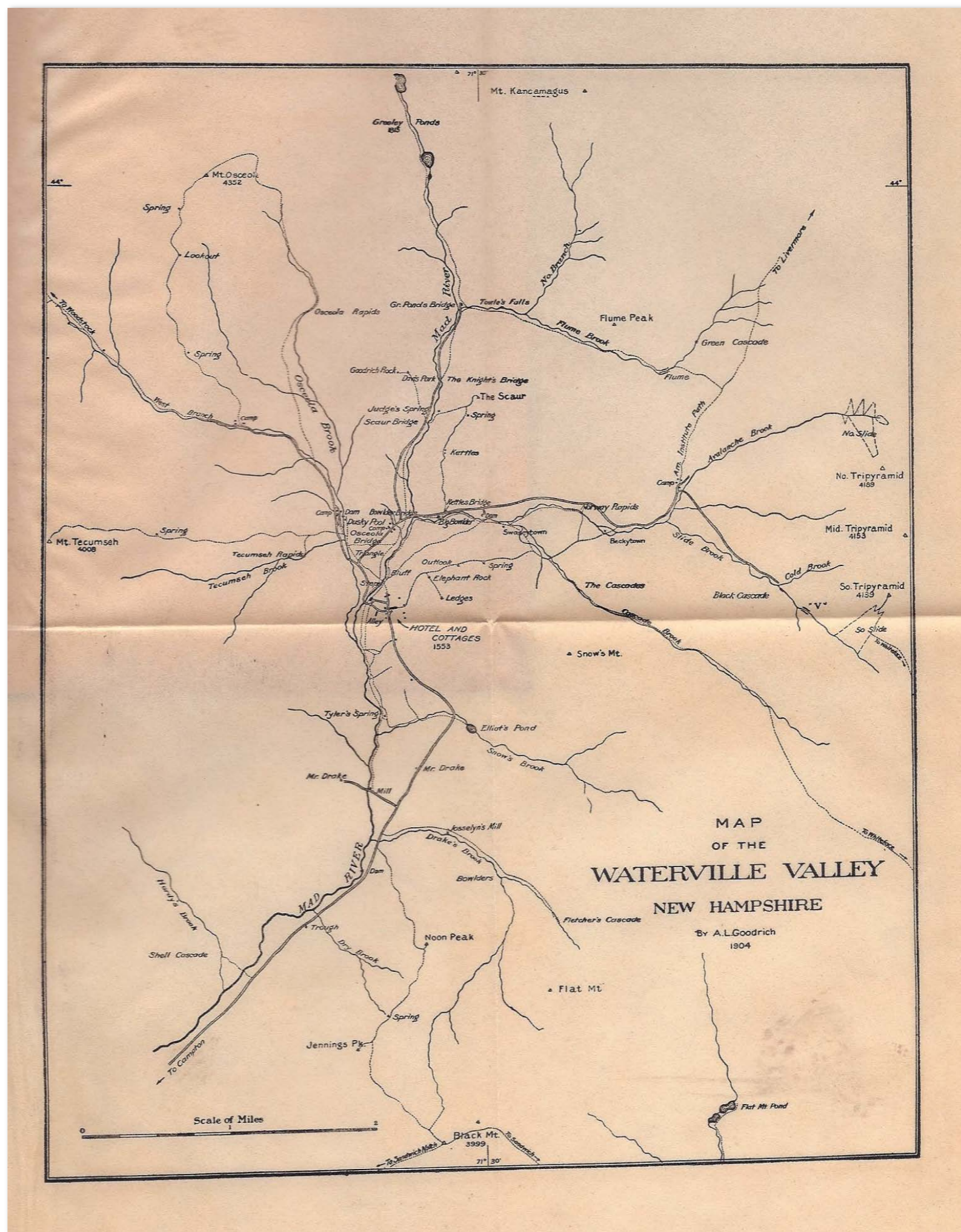


Arthur Lewis Goodrich



The...one place [in the United States] where a true system of hiking trails was built before the Civil War—was in Waterville Valley. The cluster of paths that grew up here, the Northeast's first trail system, is associated with the special character of... that quiet little "town at the end of the road..."

Laura and Guy Waterman, *Forest and Crag*





Hubert Goodrich

Margaret Goodrich



The Attractions and Rewards of Trail Making

NATHANIEL L. GOODRICH

Reprinted from APPALACHIA, Vol. XIV, No. 3,
June, 1918

Nathaniel Goodrich

Of trail making there are three stages. There is dreaming the trail, there is prospecting the trail, there is making the trail.

It was in Waterville around the turn of the century that a young trio of ardent mountaineers first tasted the attractions of trail work: Paul R. Jenks, Charles W. Blood, and Nathaniel Goodrich (A.L.'s son).

Remember those names: in future years Jenks, Blood, and Goodrich became the most active and skilled triumvirate of trailsmen in the entire Northeast

Laura and Guy Waterman, *Forest and Crag*



Climbing Lafayette, 1930



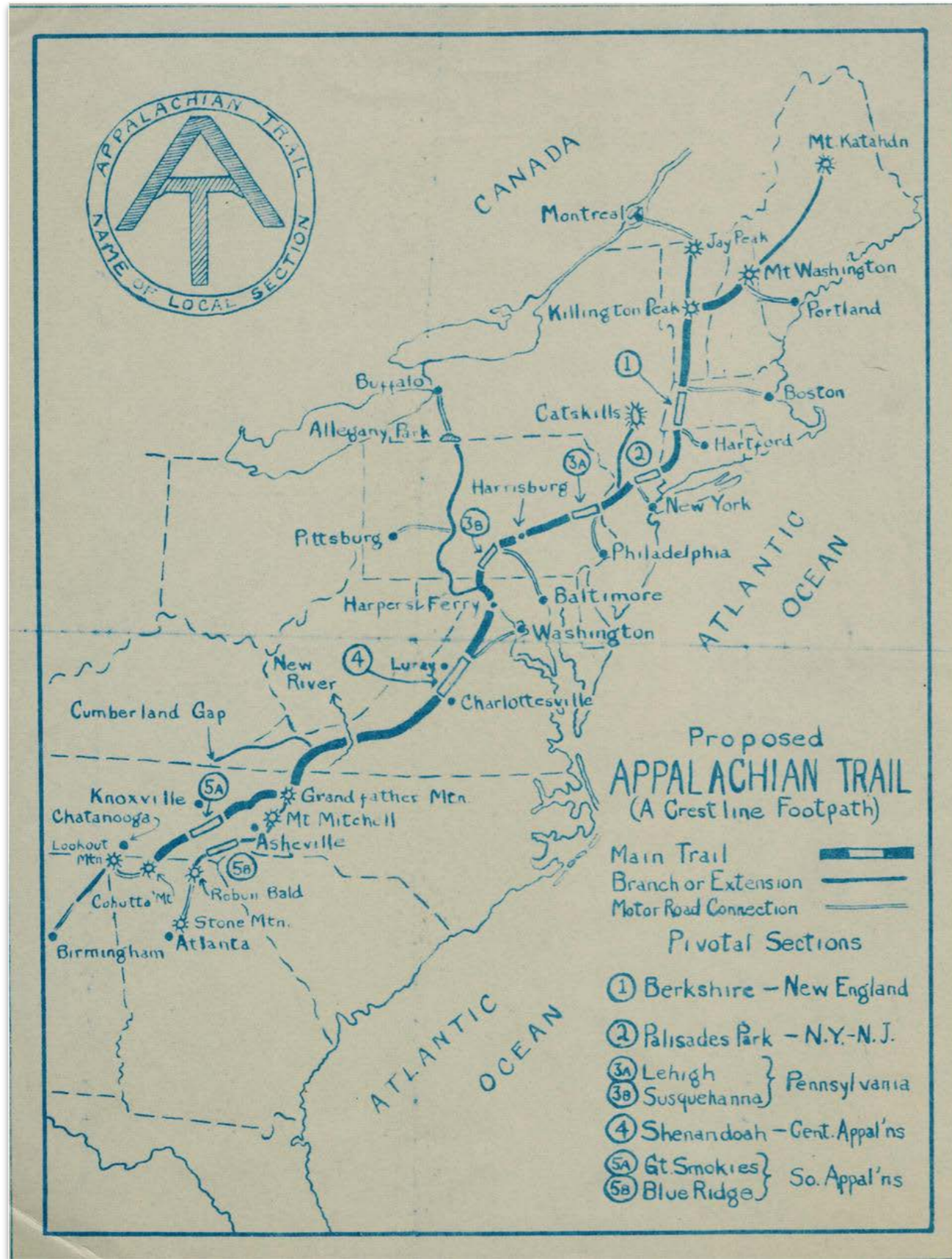
Trail work on the Franconia Ridge, Mt. Lafayette, 2016 Segment of the Appalachian Trail





Benton MacKaye

Appalachian Trail, 3500 km



What is the Appalachian Trail?

The project is one **for a series of recreational communities** throughout the Appalachian chain of mountains from New England to Georgia, these **to be connected by a walking trail**. Its purpose is to establish a base for a more extensive and systematic development of **outdoors community life**. It is a project in **housing and community architecture**.

— Benton Mackaye

An Appalachian Trail: A Project in Regional Planning

What is the Appalachian Trail?

We should survey and chart our *areas* of highland wilderness as well as cut our *lines* of trails... The main trails through these highland areas should be joined by “approach trails” from the lowlands, for we need branches and ramifications... These should lead out from the hamlets. We have in these hamlets the other half of the indigenous environment....

— Benton Mackaye, *Outdoor Culture, The Philosophy of Through Trails*
delivered at the New England Trail Conference, January 1927

What is the Appalachian Trail?

- *a series* of recreational communities
- *areas* of highland wilderness
- *connected* by a walking trail (lines)
- *joined by* “approach trails” (a trail system)
- systematic development of outdoors community life
- a project in housing and community architecture

Vision of the Sendero Pacífico

- **A network of hiking trails and huts** between the Cloud Forest in the Monteverde region and mangrove forests in the Gulf of Nicoya.
- These trails will be developed roughly in the area of the **Bellbird Biological Corridor**.
- Trails will be **accessible without entrance fees**.
- While there will be a primary trail, the Sendero Pacífico will include **secondary and associated trails**, expanding into the larger area of the biological corridor.
- These trails will **connect human communities as well as natural areas**.
- **The people in these communities will develop and maintain trails** .

Values of the Sendero Pacífico

Community

Recreation

Education

Conservation



Values of the Sendero Pacífico

Community

Recreation

Education

Conservation

