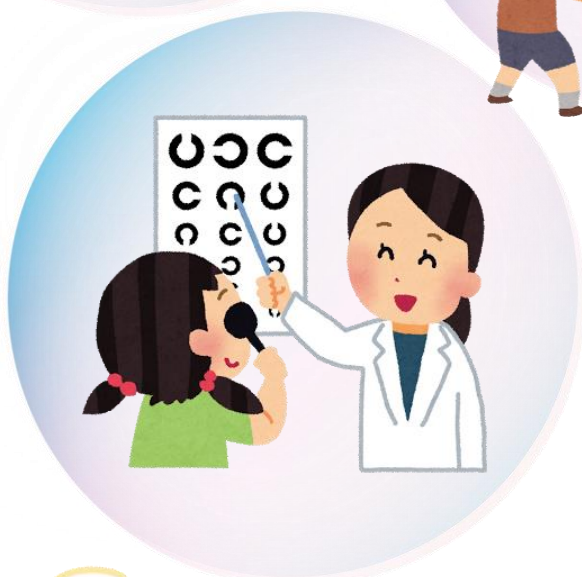
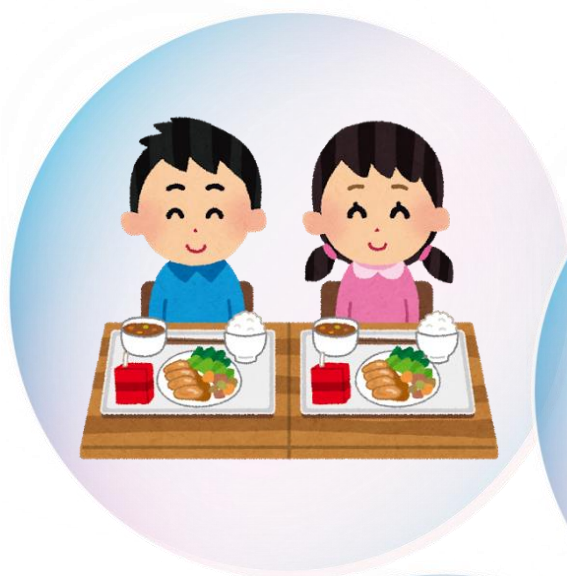


Japanese School Life Guidebook

(Elementary and Junior High Edition)

English (英語版)



Tottori Prefectural Board of Education

Table of Contents

Using the Guidebook	1
1 Japanese School System	2
(1) Pre-school Education	2
(2) Elementary & Junior High School Education	2
(3) Higher Education	2
2 Procedures for Starting School	4
3 Contents of Education	4
(1) Curriculum	4
(2) Other Educational Activities	5
4 Advancing to Higher Grades and Higher-Level Schools	5
5 School Expenses	5
6 Financial Support	6
(1) Financial Support (Elementary & Junior High)	6
(2) [Ref.] Scholarships & Tuition Discounts (High School& Univ.)	6
7 Major Events at School	7
8 A Day at School	9
9 School Rules	9
10 School Introduction (Elementary School)	12
(1) Arriving at and Leaving School	12
(2) Appointed Class & Teacher	12
(3) What to Wear & Bring	12
(4) School Lunch	14
(5) School Cleaning	14
(6) Payment of School Fees	14
(7) Documents You Need to Submit	14
(8) Elementary Education	14
(9) School Timetable	15
(10) Class Schedule	15
(11) Notifying the School	16
11 School Introduction (Junior High School)	17
(1) Arriving at School	17
(2) Commuting to School	17
(3) Leaving School	17
(4) Appointed Class & Teacher	17
(5) What to Wear & Bring	17
(6) Lunch	19
(7) School Cleaning	19

(8) Payment of School Fees	19
(9) Documents You Need to Submit	19
(10) School Timetable	19
(11) Subjects and Class Schedule	20
(12) What School Life Involves	21
(13) Notifying the School	21
12 School Clubs - Signing Up (for Junior High)	22
13 Family Household Details Form (<i>Katei Kankyou Hyou</i>)	23
14 Various Forms	25
15 Notices & Forms	26
(1) Notice of Entrance/Graduation Ceremony	26
(2) Notice of School Trip/Indoor Overnight Camp	27
(3) Outdoor Study Notice	28
(4) Home Visit Notice	29
(5) Long School Holiday Notice	30
(6) Payment Notice	31
(7) Notice of Grade/Class Parent-Teacher Conference & Class Observation	32
(8) Parent-Teacher Meeting Notice	33
(9) Athletics Day Notice	34
(10) PTA Event Notice	35
(11) Student Career/Education Survey (for Junior High)	36
16 Health Notices, Questionnaires & Reports	37
(1) Japan Sport Council Accident Mutual Benefit Plan	37
(2) Health Questionnaire	38
(3) Medical Examination Notice	40
(4) Results of Internal Checkup	41
(5) Dental Health Questionnaire	42
Results of Dental/Oral Checkup and Family Dentist Visit Advice	43
(6) Eye Checkup Questionnaire & Color Blindness Test	44
Results of Eye Checkup	46
(7) Results of Eyesight Checkup	47
(8) Ear/Nose/Throat Health Questionnaire (for Elem. & Junior High)	48
(9) Results of Ear/Nose/Throat Checkup	50
(10) Urine Test Notice	51
(11) Exclusion Notice & Request: Permission to Attend School	52
(12) Heart Checkup	53
(13) Tuberculosis Checkup Questionnaire	54
(14) Interview Sheet for Tuberculosis Scrutiny	55
(15) Musculoskeletal Checkup Questionnaire	56

Japanese School Life Guidebook (Elementary & Junior High Edition) Using the Guidebook

- 1 This guidebook is available in English as well as Japanese (the original publication).
- 2 Translated guidebooks are made easy to understand without altering the original Japanese meanings. Hence, all translations are based on the original Japanese text.
- 3 The purpose of this guidebook is to provide a student's (attending compulsory education) guardian/parent with information on the conditions of school life in Tottori Prefecture.
- 4 You can print out any of the school forms in English whenever necessary. By writing in the appropriate date and ticking the relevant information, you can submit the form to your school.
- 5 This guidebook is to be used in consideration and respect to all cultures and customs.